



# Dreamline

WHEELCHAIR SEATING

Proudly distributed by:

**permobil**

# DREAMLINE INSPIRED

## ADJUSTABILITY WITHOUT COMPROMISE

Each individual has the right to have a seating system that can be adaptable and adjustable to meet their needs throughout the day. Designed to provide the highest level of adjustability, Dreamline Wheelchair Seating was created to allow therapists to build without restriction. The therapist has the ability to meet the end users seating needs without compromising to fit into predetermined placements, shapes, or sizes.

## SEATING WORKING FOR YOU

With all of the Dreamline products, the end user is at the centre. We are constantly working to provide the end user with the most innovative and up-to-date products on the market. Every cushion, backrest and support accessory is designed to ensure that the end user has the optimal outcome in both function and comfort, while ensuring the longevity of the product. We believe that every end user has the right to the best products that meet their needs, and we strive everyday to ensure those products are delivered to you.

## TRIED AND TESTED

Dreamline Wheelchair Seating is built robust using select materials which last, such as all stainless steel fasteners and aluminium/stainless steel components. Flame resistant materials have been used and the seating has passed crash testing using different configurations, with excellent pass results.

## HIGHLIGHT COLOUR OPTIONS

Upgrade to colour highlights with 6 colour options to add your personal touch to the seating. Colour is added to side borders and non-contact surfaces of the upholstery.



## DISCLAIMER AND CHANGES OF SPECIFICATIONS

Rolapal Ltd reserves the right to alter product design, colour and technical specifications without notice. All measurements are only approximate.

Rolapal © Ltd 2019-

This catalogue may not be reproduced in any form or means, whether in whole or in part without prior written consent of Rolapal Ltd.

Upgrade or improvement in products may result in deletion or alternative product.

Dreamline Wheelchair Seating products should only be prescribed in conjunction with a professional therapist.

# TABLE OF CONTENTS

## SEAT BASES 5

Cushion Rigid Base	6
Cushion Rigid Lateral	6
Quick-Release Seat Pan	7
Seat Base Accessories	7
Seat Base Modifications	7

## CUSHIONS 9

Dreamline BUBBLE TECHNOLOGY	10
Dreamline ASSIST Cushion	11
Dreamline SUPPORT Cushion	12
Dreamline CONTOUR Cushion	13
Dreamline G3 Cushion	14
Dreamline STX Cushion	15
Cushion Accessories	19
Cushion Modifications	19

## BACKRESTS 21

Dreamline Backrest Hardware	22
Dreamline PRO Backrest	23
Dreamline CONTOUR Backrest	24
Dreamline S3 Backrest	25
Dreamline SUPPORT Backrest	26
Dreamline BAC System	27
Dreamline STX Backrest	28
Backrest Accessories	29
Backrest Modifications	29

## SUPPORTS 31

Dreamline Swing-Down Pommel	32
Dreamline Hip Guides / Armrests	33
Armrest Blocks	34
Fixed Thoracic Laterals	35
Swing-Away Thoracic Laterals	35
Swing-Away Thoracic Laterals Bracket Options	36
Lateral Pad Options	37
Lateral Pad Templates	38
Headrest Bracket Option	39
Headrest Pad Options	39

## HIP BELTS / HARNESSSES 41

Hip Belt Options	42
Harness Options	43
Harness Accessories	43

## TRANSPORT SAFETY 44

Crash Testing	44
---------------	----



# Dreamline

## SEAT BASES

# CUSHION RIGID BASE

The cushion rigid base attaches directly to the underside of the cushion foam inner with hook and loop.

- Thin 4mm panel
- Lightweight durable plastic construction



## TECHNICAL

Size options below correlate to cushion size. Note that the rigid base supplied will be smaller than physical dimensions of the cushion i.e. a rigid base to fit a 16"x16" cushion will measure 14 ½" width and 15 ½" length. This is so it tightens the sling upholstery of the wheelchair rather than bridge across the seat rails.

### SIZE OPTIONS (IN INCHES)

8 x 8	8 x 10	10 x 10	10 x 12	12 x 12	12 x 14
14 x 14	14 x 16	14 x 18	16 x 16	16 x 18	16 x 20
17 x 17	18 x 16	18 x 18	18 x 20	20 x 18	20 x 20
22 x 18	22 x 20	22 x 22	24 x 20	24 x 22	24 x 24

Custom sizes available

# CUSHION RIGID LATERAL

The rigid lateral support increases the lateral stability of the cushion where increased outward forces of the lower extremities are concentrated. The lateral support attaches directly to the underside of the cushion foam inner with hook and loop.

- Lightweight durable plastic construction



## TECHNICAL

When attaching the rigid lateral support to the cushion, position it about 15mm back from the front edge to avoid contact with the users lower extremities.

### SIZE OPTIONS (IN INCHES)

8	10	12	16	17	18	20
22	24	Custom sizes available				



# QUICK-RELEASE SEAT PAN

For a secure, solid base on a folding or collapsible wheelchair frame, the Dreamline quick-release seat pan is easy and quick to install and use.

- Crash tested to WC20 and ISO15860 Standards
- Width adjustable hardware
- Easy press to lock and pop-up release function
- Predrilled holes and slots for attaching hip-guides, swing-down pommel, hip belts, etc

## TECHNICAL

The clamps fit wheelchair seat rail diameters from ¾" – 1".



A compact clamp design enables unrestricted folding of the wheelchair frame.

### SIZE OPTIONS (IN INCHES)

12 x 12	12 x 14	14 x 14	14 x 16	14 x 18	16 x 16
16 x 18	16 x 20	18 x 18	18 x 20	20 x 20	

Custom sizes available

# SEAT BASE ACCESSORIES



EXTRA CLAMP  
KIT FOR MOBILITY  
BASE

# SEAT BASE MODIFICATIONS

- Leg length discrepancy cut-outs
- Custom size options
- Custom size rear corner cut-outs







# Dreamline

## CUSHIONS

# BUBBLE TECHNOLOGY SERIES

The Dreamline BUBBLE TECHNOLOGY is offered on a series of cushions. These uniquely designed cushions offer a 10mm contour lengthwise providing the bubble effect, to provide the user with the optimal seating experience.

The unique curved contouring of the Dreamline cushion greatly increases weight dispersion and reduces the likelihood of pelvic forward migration regardless of how the user is sitting. The design works to reduce pressure to areas of increased weight by dispersing the weight along regions of lesser pressure, balancing the weight of the end user over the entire cushion. Further pressure is reduced to the coccyx and pelvic girdle with an extended cut-out along the centre of the cushion.

## 5 PRINCIPLES OF BUBBLE TECHNOLOGY

- 1 **Promoting Compression vs Tension** - Foam is like a coil spring, it's designed for compression not tension. Tension and shear forces break down the cells of foam, shortening the life of a cushion.
- 2 **Designing Foam to Replicate Air** - BUBBLE TECHNOLOGY is designed to replicate the weight redistribution effect of air, in a foam cushion.
- 3 **Providing Adjustability** - The curvature shaping makes the pre-ischial shelf always in the right position which is great for growth or postural changes.
- 4 **Improving Circulation** - The forward curvature of the cushion eases pressure behind the knee, increasing blood flow to the lower limbs.
- 5 **Allowing Full Immersion** - The BUBBLE TECHNOLOGY was designed so that as the end user immerses into the foam, the tension of the cover will decrease. This promotes the maximum amount of immersion.



SIDE VIEW



FRONT VIEW



REAR VIEW

# DREAMLINE ASSIST CUSHION

Incorporating the signature BUBBLE TECHNOLOGY, the Dreamline ASSIST Cushion is a comfortable solution for full time wheelchair users who have good stability and a low risk of skin breakdown.

- Signature BUBBLE contouring for long term comfort, enhanced weight distribution and improved circulation to lower limbs
- Sunmate visco-elastic foam overlay
- 4-way stretch water-resistant incontinence cover
- Outer breathable moisture wicking cover
- Includes a set of 4 positioning pads for pelvic obliquity
- 15mm high contouring

## TECHNICAL

- Max user weight – 120kg
- 100% urethane foam inner (no Latex)
- Modifications available

WEIGHT REDISTRIBUTION	<div></div>	<div></div>	<div></div>	<div></div>	<div></div>
STABILITY	<div></div>	<div></div>	<div></div>	<div></div>	<div></div>
POSITION OPTIONS	<div></div>	<div></div>	<div></div>	<div></div>	<div></div>

## SIZE OPTIONS (IN INCHES)

8 x 8	8 x 10	10 x 10	10 x 12	12 x 12	12 x 14
14 x 14	14 x 16	14 x 18	16 x 16	16 x 18	16 x 20
17 x 17	18 x 16	18 x 18	18 x 20	20 x 18	20 x 20
22 x 18	22 x 20	22 x 22	24 x 20	24 x 22	24 x 24

Custom sizes available

## CUSHION ACCESSORIES



OUTER COVER



INCONTINENCE COVER



POSITIONING PADS



# DREAMLINE SUPPORT CUSHION

The Dreamline SUPPORT Cushion has the same design as the ASSIST Cushion but with enhanced contouring for extra weight distribution and positioning support.

- Signature BUBBLE contouring for long term comfort, enhanced weight distribution and improved circulation to lower limbs
- Sunmate visco-elastic foam overlay
- 4-way stretch water-resistant incontinence cover
- Outer breathable moisture wicking cover
- Includes a set of 4 positioning pads for pelvic obliquity
- 35mm high contouring



## TECHNICAL

- Max user weight – 120kg
- 100% urethane foam inner (no Latex)
- Modifications available

WEIGHT REDISTRIBUTION					
STABILITY					
POSITION OPTIONS					

SIZE OPTIONS (IN INCHES)					
8 x 8	8 x 10	10 x 10	10 x 12	12 x 12	12 x 14
14 x 14	14 x 16	14 x 18	16 x 16	16 x 18	16 x 20
17 x 17	18 x 16	18 x 18	18 x 20	20 x 18	20 x 20
22 x 18	22 x 20	22 x 22	24 x 20	24 x 20	24 x 24
Custom sizes available					

## CUSHION ACCESSORIES



OUTER COVER



INCONTINENCE COVER



EXTRA  
POSITIONING PADS

# DREAMLINE CONTOUR CUSHION

The Dreamline CONTOUR Cushion has the highest contouring of the BUBBLE TECHONOLGY series, offering excellent weight distribution and stability. It is a solution for full time wheelchair users who have reduced stability and low-to-moderate risk of skin breakdown.

- Signature BUBBLE contouring for long term comfort, enhanced weight distribution and improved circulation to lower limbs
- Sunmate visco-elastic foam overlay
- 4-way stretch water-resistant incontinence cover
- Outer breathable moisture wicking cover
- Includes a set of 4 positioning pads for pelvic obliquity
- 60mm high contouring with reinforced inserts to bolster the pommel and lateral regions

## TECHNICAL

- Max user weight – 120kg
- 100% urethane foam inner (no Latex)
- Modifications available



WEIGHT REDISTRIBUTION					
STABILITY					
POSITION OPTIONS					

SIZE OPTIONS (IN INCHES)					
8 x 8	8 x 10	10 x 10	10 x 12	12 x 12	12 x 14
14 x 14	14 x 16	14 x 18	16 x 16	16 x 18	16 x 20
17 x 17	18 x 16	18 x 18	18 x 20	20 x 18	20 x 20
22 x 18	22 x 20	22 x 22	24 x 20	24 x 22	24 x 24
Custom sizes available					

## CUSHION ACCESSORIES



OUTER COVER



INCONTINENCE COVER



EXTRA  
POSITIONING PADS

# DREAMLINE G3 CUSHION

The Dreamline G3 Cushion is a redefined gel cushion with mild contouring, designed for an active user with moderate-to-high pressure management needs. The G3 Cushion offers the support and benefit of gel without the maintenance and potential risks of a traditional gel cushion.

- Sunmate visco-elastic foam overlay
- Unique and patented gel cluster packs for maximum skin protection
- 4-way stretch water-resistant incontinence cover
- Outer breathable moisture wicking cover
- Includes a set of 10 BAC pads for enhanced positioning



## TECHNICAL

- Max user weight – 140kg
- 100% urethane foam inner (no Latex)
- Modifications available

WEIGHT REDISTRIBUTION	<input checked="" type="checkbox"/>	<input checked="" type="checkbox"/>	<input checked="" type="checkbox"/>	<input checked="" type="checkbox"/>	<input type="checkbox"/>
STABILITY	<input checked="" type="checkbox"/>	<input checked="" type="checkbox"/>	<input checked="" type="checkbox"/>	<input checked="" type="checkbox"/>	<input type="checkbox"/>
POSITION OPTIONS	<input checked="" type="checkbox"/>	<input checked="" type="checkbox"/>	<input checked="" type="checkbox"/>	<input checked="" type="checkbox"/>	<input type="checkbox"/>

SIZE OPTIONS (IN INCHES)					
12 x 12	12 x 14	14 x 14	14 x 16	14 x 18	16 x 16
16 x 18	16 x 20	17 x 17	18 x 16	18 x 18	18 x 20
18 x 22	20 x 18	20 x 20			
Custom sizes available					

## CUSHION ACCESSORIES



OUTER COVER



INCONTINENCE COVER



EXTRA GEL/FOAM  
CLUSTER PACKS



# DREAMLINE STX CUSHION

The Dreamline STX Cushion is a fully adjustable cushion with full height contouring, designed for inactive users who have asymmetrical positioning requirements and high pressure management needs. The STX Cushion provides the user the highest amount of adjustability without compromise.

- A closed cell foam base for maximum stability with adjustable components
- 4-way stretch water-resistant incontinence cover
- Outer breathable moisture wicking cover
- Includes a set of 10 BAC pads for enhanced positioning
- 80mm high contouring
- Adjustable foam / gel cluster packs



## TECHNICAL

- Max user weight – 140kg
- EVA closed cell foam and urethane foam / gel inner (no latex)
- Modifications available

WEIGHT REDISTRIBUTION

STABILITY

POSITION OPTIONS

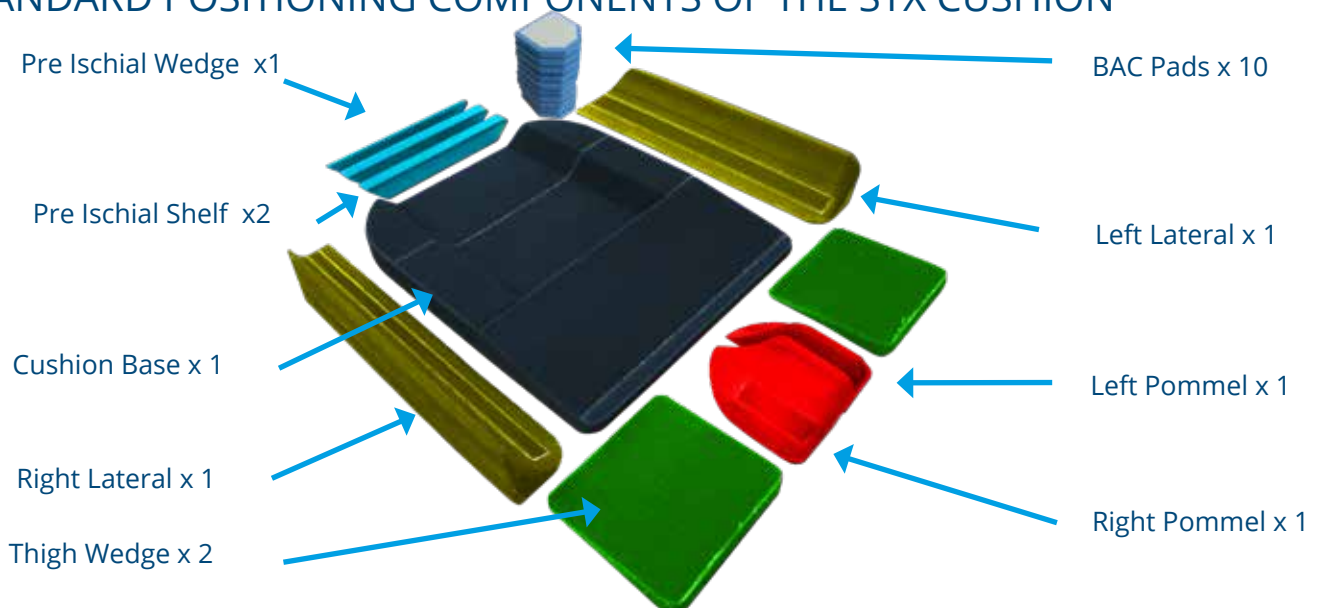


## SIZE OPTIONS (IN INCHES)

12 x 12	12 x 14	14 x 14	14 x 16	14 x 18	16 x 16
16 x 18	16 x 20	17 x 17	18 x 16	18 x 18	18 x 20
18 x 22	20 x 18	20 x 20			

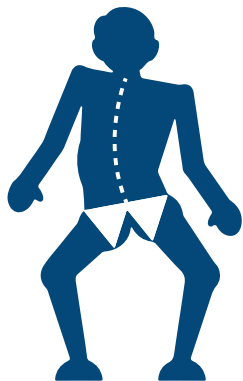
Custom sizes available

## STANDARD POSITIONING COMPONENTS OF THE STX CUSHION



# DREAMLINE STX CUSHION POSITIONING

## PELVIC OBLIQUITY



Use the stack of 10 BAC pads to correct/ accommodate pelvic obliquity. Pads can be layered for higher build requirements.



## PELVIC ROTATION



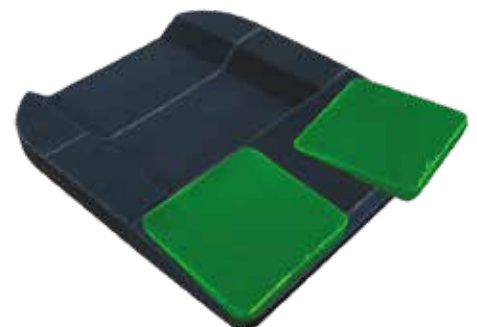
The pre-ischial pads may be spaced out, angled, flexed into a curved shape or removed to create the exact space for the pelvis.



## LEG LENGTH DISCREPANCY

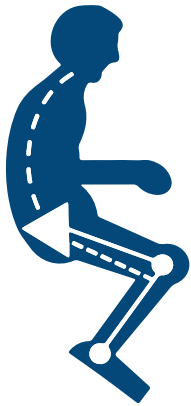


Thigh wedges may be used to accommodate a leg length discrepancy and an abducted or adducted sitting position.

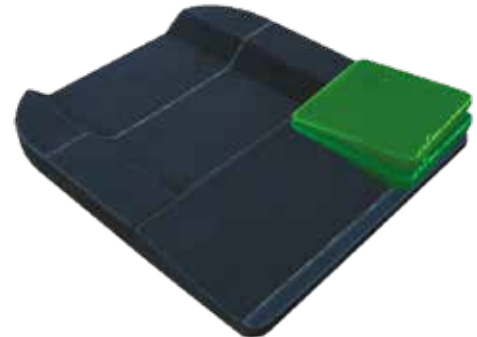


# DREAMLINE STX CUSHION POSITIONING

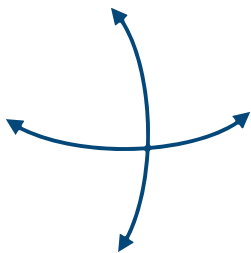
## TIGHT HAMSTRINGS



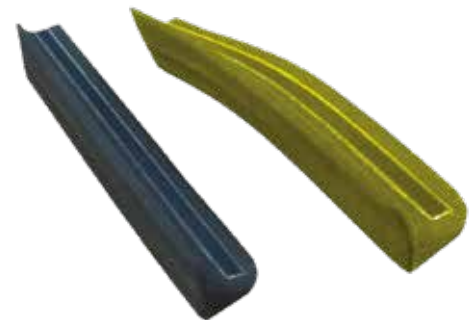
Thigh wedges are able to be removed or layered to achieve different angles of lift, raising and lowering each femur individually. This is particularly useful for tight hamstrings.



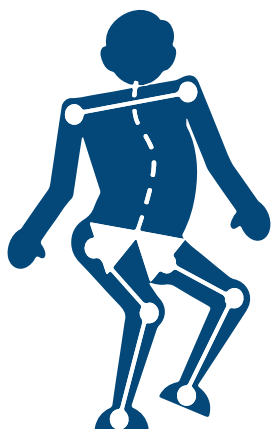
## LATERALS FLEXED



The laterals may be flexed into shape to accurately follow the contours from the pelvis to the knee. This enables a smooth, unbroken surface along the leg for improved weight distribution.



## POMMEL ASYMMETRICAL SET-UP

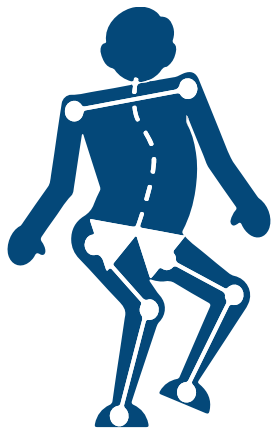


The pommel is divided into 2 halves so the exact desired position of each femur is achieved. The pommel is firm for accurate long-term positioning.

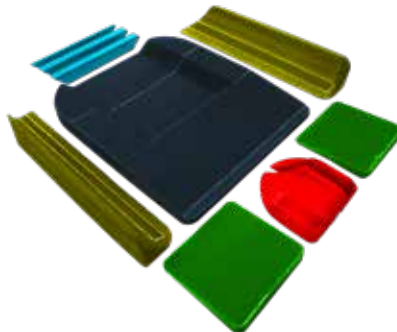


# DREAMLINE STX CUSHION POSITIONING

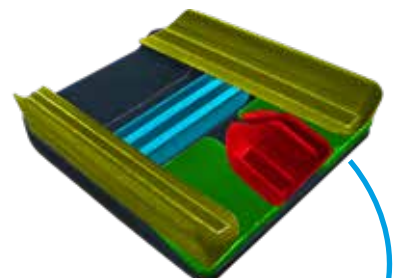
## FULL ASYMMETRICAL SET-UP



### 1. COMPONENTS



### 2. SYMMETRICAL



### 3. ASYMMETRICAL

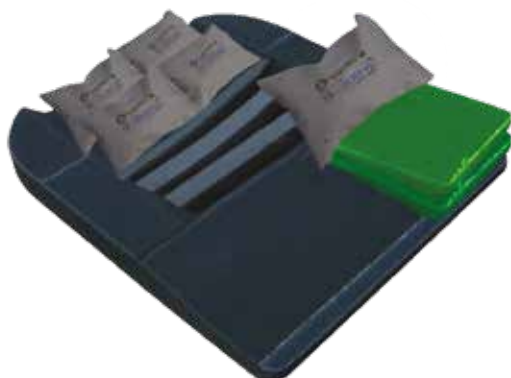


With surfaces covered in hook and loop (Velcro), accurate asymmetrical positions are easily achieved providing a stable base for each.

When building the base for the end user, allow extra room around the body for the comfort wrap to be placed over top.

## CLUSTER PACKS AS SHAPERS AND FILLER

Use extra cluster packs (gel or foam) to create more shapes and fill cavities if required.



## EXTRA LATERAL SEGMENTS

Extra lateral segments are able to be purchased separately to further customise the seat base to the user.



# CUSHION ACCESSORIES



OUTER  
COVER



INCONTINENCE  
COVER



POSITIONING  
PADS



CUSHION  
GEL WRAP



STX  
LATERALS



STX PRE-ISCHIAL  
SHELF



STX PRE-ISCHIAL  
WEDGE



STX THIGH  
WEDGE



STX POMMEL  
LEFT / RIGHT



STX LATERAL  
SEGMENTS  
2" / 3" / 4"



STX BAC  
PADS



STX FOAM CLUSTER  
PACK



STX GEL CLUSTER  
PACK

## CUSHION MODIFICATIONS

Leg length discrepancy cut-outs	Custom height in-built lateral contouring
Extra thickness for heavy user	Remove lateral contouring
Channel cut-outs for drop base	Custom height in-built pommel
Taper cut for abduction sitting e.g hip spica	Remove pommel contouring
Custom fabric selection	





# Dreamline

## BACKRESTS

# DREAMLINE BACKREST HARDWARE

## U2 QUICK RELEASE HARDWARE



The U2 quick-release hardware is designed to integrate with all of the Dreamline Backrests. The U2 saddles are stainless steel for durability and the quick-release function is made for easy use (lift blue lever to unlock and press to lock).

The U2 backrest hardware is compact to enable more room on the backrest shell for other attachments. The clamps are compatible with wheelchair frame tubing diameters from 3/4" (19mm) up to 1" (25.4mm) without requiring spacers. The U2 clamps may be reversed for forward or rear mounting on the wheelchair frame.

The U2 clamps still operate freely if mounted at different heights or angles.

## ADJUSTABILITY

- 7" DEPTH ADJUSTMENT
- 60° ANGLE ADJUSTMENT (+ /-30°)
- 4" WIDTH ADJUSTMENT



## FITMENT

The Dreamline Backrests have 2-point attachment hardware as standard but can be upgraded to 4-point if required.

# DREAMLINE PRO BACKREST

Dreamline PRO Backrests are constructed from ultra-lightweight carbon fibre with low to mid back height options for the active user.

- Includes lumbar pad and lateral stability wedges
- Option for low profile U2 Hardware providing a further decrease in the overall weight
- High resilient foam inner for durability



## TECHNICAL

- Max user weight - 135 kg
- 100% urethane foam inner (no Latex)
- Modifications available



## SIZE OPTIONS (IN INCHES)

12 x 6	12 x 8	12 x 10	14 x 7	14 x 9	14 x 11
14 x 13	16 x 7	16 x 9	16 x 11	16 x 13	16 x 15
18 x 7	18 x 9	18 x 11	18 x 13	18 x 15	20 x 7
20 x 9	20 x 11	20 x 13	20 x 15		

Custom sizes available

# DREAMLINE CONTOUR BACKREST

The Dreamline CONTOUR Backrest has a rigid aluminium 1-piece shell with integrated lateral support.

- Sunmate visco-elastic foam overlay



## TECHNICAL

- Max user weight - 135 kg
- 100% urethane foam inner (no Latex)
- Thickness of laterals - 30 mm
- Clearance between backrest overall width to outside of wheelchair frame - ½" each side
- Lateral Contour depth
  - Up to 14" backrests - 150 mm
  - 16" - 18" backrests - 170 mm
  - 20" backrests - 190 mm



The Dreamline CONTOUR Backrest's signature BUBBLE contour improves immersion, enabling the backrest to closely match the contours of the body. A central channel relieves pressure along the spinal column.

Carefully constructed with foam by bonding high resilience foam to a high density, impact absorbing, visco-elastic overlay to provide maximum support. Strategically positioned ventilation holes in the foam and backrest shell, provide excellent air exchange.

SIZE OPTIONS (IN INCHES)					
8 x 10	8 x 12	10 x 12	10 x 14	12 x 14	12 x 16
12 x 18	14 x 16	14 x 18	14 x 20	16 x 18	16 x 20
16 x 22	18 x 18	18 x 20	18 x 22	20 x 18	20 x 20
20 x 22					
Custom sizes available					

# DREAMLINE S3 BACKREST

The S3 Backrest is a thick comfortable option due to its "cube cut" soft foam that gently moulds to the end user.

This cube cut foam will allow for maximum immersion into the backrest cushion providing increased surface area contact. This allows for enhanced comfort and greater pressure distribution for clients with a neutral or minimal postural asymmetries.

## TECHNICAL

- Max user weight - 135 kg
- 100% urethane foam inner (no Latex)
- Clearance between backrest overall width to outside of wheelchair frame - 35 mm each side



### SIZE OPTIONS (IN INCHES)

8 x 10	8 x 12	10 x 12	10 x 14	12 x 14	12 x 16
12 x 18	14 x 14	14 x 16	14 x 18	14 x 20	16 x 16
16 x 18	16 x 20	16 x 22	18 x 18	18 x 20	18 x 22
20 x 18	20 x 20	20 x 22			

Custom sizes available

#### SIZE OPTIONS (dimensions in inches - width x height)

The backrest is designed to fit between the canes of the wheelchair frame, so the physical width measures 70 mm less than the stated width e. g. A backrest for a 14" (355 mm) width wheelchair measures 11.22" (285 mm) wide.

# DREAMLINE SUPPORT BACKREST

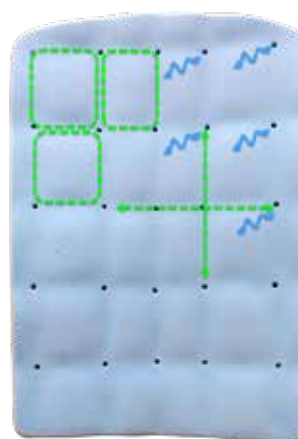
The Dreamline SUPPORT Backrest is designed as a platform for attaching supports such as, swing-away laterals and harnesses for the high needs user. It can be upgraded to include the BAC System for asymmetrical body shapes.



Aluminium shell construction with multiple holes for attachment points improve air-exchange.

A medium density slim foam core for excellent upper trunk support is overlaid with Sunmate visco-elastic foam for long term comfort and enhanced immersion.

The backrest inner has channels and holes for improved air-exchange and conformability.



## TECHNICAL

- Max user weight - 135 kg
- 100% urethane foam inner (no Latex)
- Clearance between backrest overall width to outside of wheelchair frame - 35 mm each side
- Modifications available

## SIZE OPTIONS (IN INCHES)

8 x 10	8 x 12	10 x 12	10 x 14	12 x 14	12 x 16
12 x 18	14 x 14	14 x 16	14 x 18	14 x 20	16 x 16
16 x 18	16 x 20	16 x 22	18 x 18	18 x 20	18 x 22
20 x 18	20 x 20	20 x 22			

Custom sizes available

## SIZE OPTIONS (dimensions in inches - width x height)

The backrest is designed to fit between the canes of the wheelchair frame, so the physical width measures 70 mm less than the stated width  
e. g. A backrest for a 14" (355 mm) width wheelchair measures 11.22" (285 mm) wide.



# DREAMLINE BAC SYSTEM

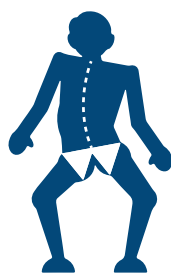
This uniquely designed system takes away the limitations of working within defined spaces or pockets creating the ultimate fit for the end user. The BAC (Backrest Advanced Contour) System can be retro fitted to any Dreamline SUPPORT or S3 Backrest as an upgrade enabling fast and accurate asymmetrical contouring for high needs users. The BAC System consists of multiple pads which can be layered in any position or orientation on the backrest to match the backrest to the end user.



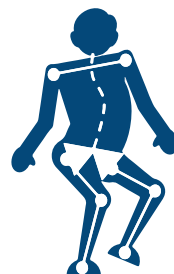
LORDOSIS



KYPHOSIS



C-SCOLIOSIS



S-SCOLIOSIS



ROTATION



- Removable rigid inner shell may be slipped out and configured whilst the user remains comfortably seated
- 4-way stretch cover provides limitless build possibilities
- Positioning pads are small for better accuracy, may be rotated to any angle and positioned anywhere on the rigid inner shell
- 10 extra BAC positioning pads are supplied with each backrest and more are available upon request

## BAC MAX

Includes twice as many layers as the Standard BAC for extreme positioning needs.



## SIZE OPTIONS (IN INCHES)

8 x 10	8 x 12	10 x 12	10 x 14	12 x 14	12 x 16
12 x 18	14 x 14	14 x 16	14 x 18	14 x 20	16 x 16
16 x 18	16 x 20	16 x 22	18 x 18	18 x 20	18 x 22
20 x 18	20 x 20	20 x 22			

Custom sizes available

## SIZE OPTIONS (dimensions in inches - width x height)

The backrest is designed to fit between the canes of the wheelchair frame, so the physical width measures 70 mm less than the stated width e. g. A backrest for a 14" (355 mm) width wheelchair measures 11.22" (285 mm) wide.

# DREAMLINE STX BACKREST

The Dreamline STX Backrest is the most capable backrest for the most comfortable positioning of asymmetrical postures. Fast and accurate yet soft and comfortable, positioning is achieved through multiple pillows of visco-elastic foam which may be layered in any orientation to match the backrest to the end user.



LORDOSIS



KYPHOSIS



C-SCOLIOSIS



S-SCOLIOSIS



ROTATION



Outer breathable cover



Inner cover contains the positioning pillows creating an exclusive zone for the therapist or seating technician



Multiple Sunmate cluster packs attach to the inner pad. Visco-elastic foam inside pillows mould to the end users body shape

## TECHNICAL

- Max user weight - 135 kg
- 100% urethane foam inner (no Latex)
- Clearance between backrest overall width to outside of wheelchair frame - 35mm each side

## SIZE OPTIONS (IN INCHES)

8 x 10	8 x 12	10 x 12	10 x 14	12 x 14	12 x 16
12 x 18	14 x 14	14 x 16	14 x 18	14 x 20	16 x 16
16 x 18	16 x 20	16 x 22	18 x 18	18 x 20	18 x 22
20 x 18	20 x 20	20 x 22			

Custom sizes available

## SIZE OPTIONS (dimensions in inches - width x height)

The backrest is designed to fit between the canes of the wheelchair frame, so the physical width measures 70 mm less than the stated width e. g. A backrest for a 14" (355 mm) width wheelchair measures 11.22" (285 mm) wide.

# BACKREST ACCESSORIES



OUTER COVER



INCONTINENCE  
COVER



HARNESS RETAINER  
KIT



LATERAL STABILITY  
WEDGE



LUMBAR  
PAD



EXTRA STX  
SUNMATE PILLOWS



BAC  
SYSTEM



WIDTH  
REDUCTION KIT



EXTRA SET OF  
U2 CLAMPS



INFILL  
PAD



GROWTH  
KIT

## BACKREST MODIFICATIONS

T-shape modification	Extra layer of Sunmate visco-elastic foam
Gel insert in spinal region	Supracor overlay inserted into cover
Custom fabric selection	



# Dreamline

## SUPPORTS



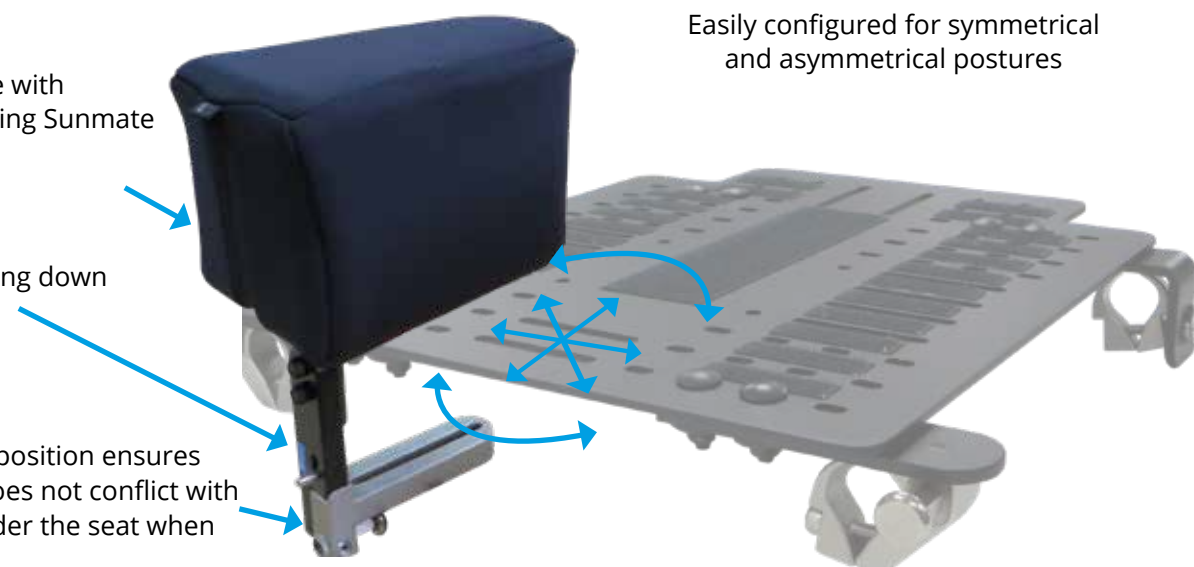
# SWING-DOWN POMMEL

Firm inner core with pressure relieving Sunmate foam overlay

Lift lever to swing down

Forward pivot position ensures the pommel does not conflict with equipment under the seat when swung down

Easily configured for symmetrical and asymmetrical postures



The quick-release mechanism enables the operator to either swing down or completely remove the pommel.

SWUNG DOWN MODE



REMOVED MODE



Pull plunger to completely remove pommel from the seat pan

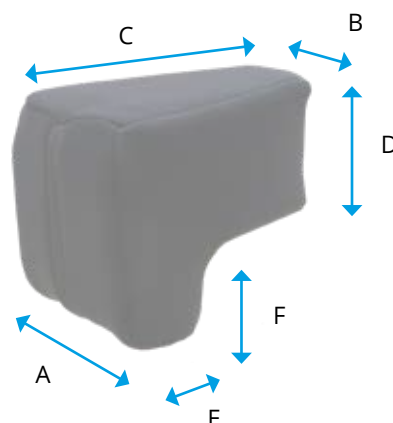
## PAD OPTION



STRAIGHT PAD



WATERFALL PAD



	A	B	C	D	E	F
SMALL	70MM	50MM	110MM	90MM	70MM	50MM
MEDIUM	95MM	60MM	150MM	100MM	75MM	60MM
LARGE	115MM	85MM	180MM	110MM	80MM	60MM



# HIP GUIDES / ARMRESTS

Both bracket options may be attached to either a seat pan or utility rails of a power chair.



REMOVABLE BRACKETS



FLIP DOWN /  
REMOVABLE BRACKET  
SEE BELOW

## SWING DOWN AND REMOVABLE



1. LIFT LEVER



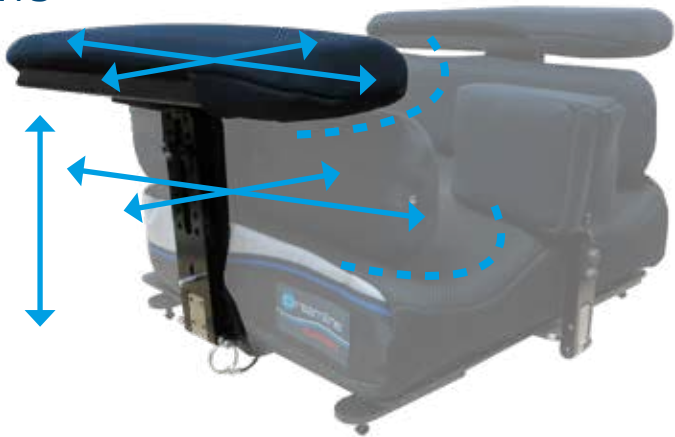
2. SWING DOWN



3. PULL PIN AND REMOVE

## MULTIPLE SLIDING ADJUSTMENTS

The hip guides and arm pads may each be individually set at different depths, widths, heights and angles for abducted or windswept postures.



## HIP PAD / ARM PAD SIZE OPTIONS



LENGTH	HEIGHT / WIDTH
10" (250MM)	80MM
12" (300MM)	80MM
14" (350MM)	95MM
16" (400MM)	95MM
18" (450MM)	95MM

# ARMREST BLOCKS

## ELBOW BLOCKS

Designed to protect the end user when in tilt, the Dreamline Elbow Blocks attach to the underside of the armrest shell. They are adjustable in height and depth and have angle adjustability.

	LENGTH	HEIGHT
SMALL	75MM	75MM
MEDIUM	90MM	80MM
LARGE	100MM	95MM



## FOREARM BLOCKS

Designed to protect the end user when in tilt or increase support to the end users with Athetosis, the Dreamline Forearm Blocks attach to the underside of the armrest shell. They are adjustable in height and width.

	LENGTH	HEIGHT
SMALL	125MM	80MM
MEDIUM	150MM	80MM
LARGE	200MM	90MM



## FIXED THORACIC LATERALS

The Dreamline Fixed Laterals, with their teardrop shaping, are adjustable in height and angle creating accurate and comfortable fixed thoracic lateral support.

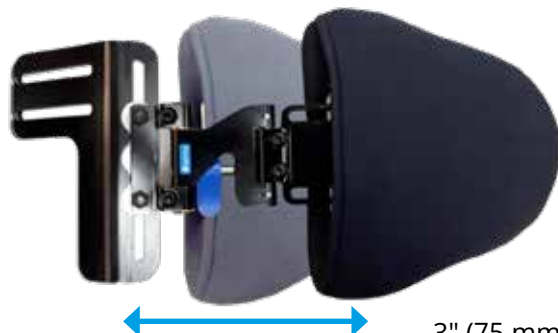


## SWING-AWAY THORACIC LATERALS

Dual pivot mechanism for infinite width adjustment



The pull lever quick release design is easy and intuitive to use

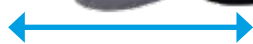


### STALLION

LATERAL BRACKET



Swing-away lateral bracket options enable the pad to tilt, to accurately match and support asymmetrical fixed body angles



3" (75 mm) of depth adjustability enable the reach required to accommodate asymmetrical postures

# SWING-AWAY THORACIC LATERALS

STALLION  
BRACKET



STALLION LO-RISER  
BRACKET



STALLION KIDS LO-RISER  
BRACKET



STALLION CLAMP-ON  
BRACKET



STALLION PIVOT  
BRACKET



STALLION LO-RISER  
PIVOT BRACKET



STALLION CLAMP-ON  
PIVOT BRACKET



EXTRA  
LINK



LATERAL PROTECTOR  
BOOT



# LATERAL PAD OPTIONS

Adjustable fixed and swing-away brackets with a selection of pad options offer the best fit, level of support, stability and ease of access to the end user.

The supporting surface of each lateral pad includes a layer of pressure relieving Sunmate foam for additional protection.

Lateral covers are moisture resistant and removable for washing.



STRAIGHT PADS



CURVED PADS

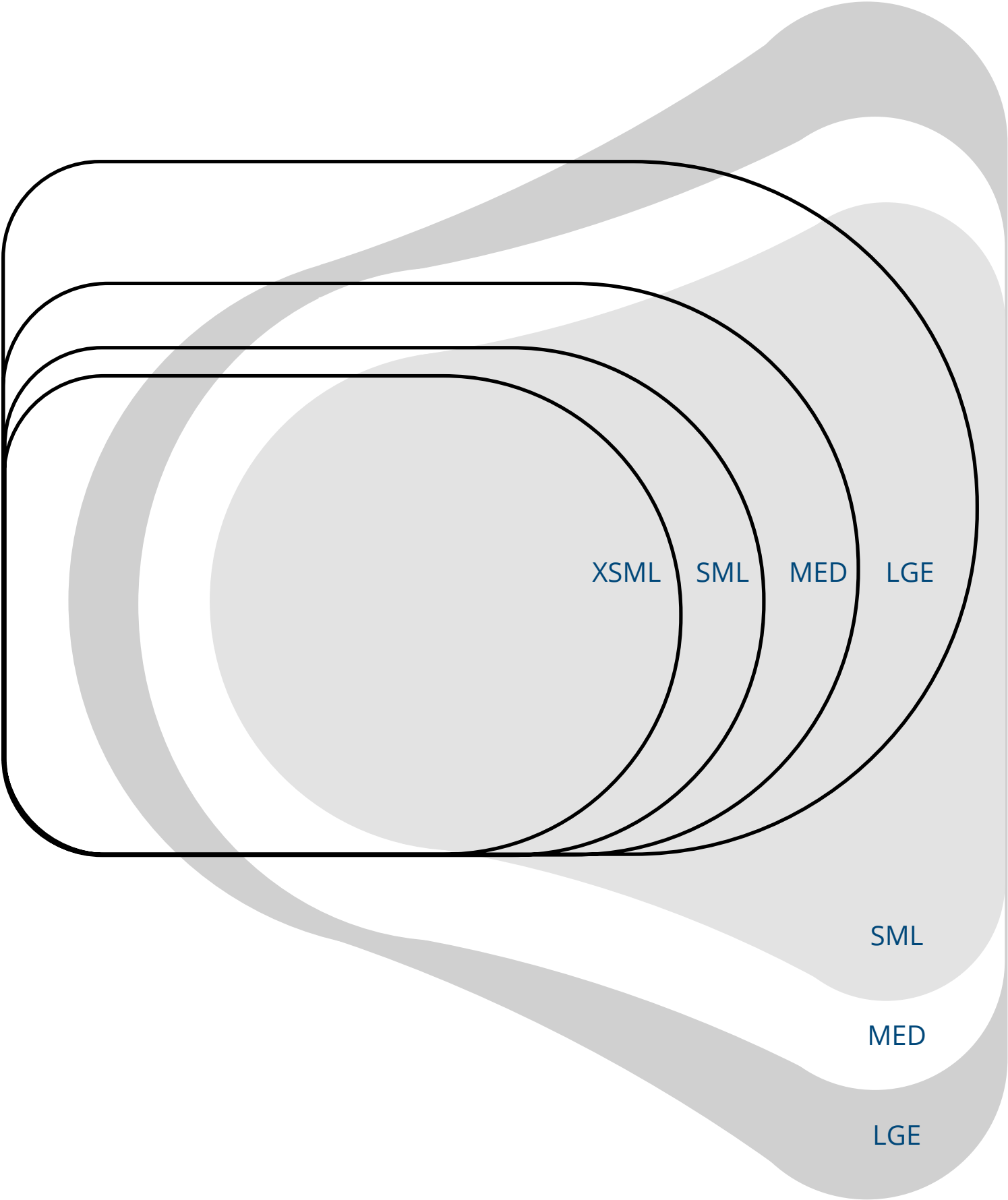


TEAR DROP PADS

## LATERAL PAD DIMENSIONS

	X-SMALL	SMALL	MEDIUM	LARGE
STRAIGHT	95mm (H) x 130mm (L)	100mm (H) x 145mm (L)	110mm (H) x 165mm (L)	130mm (H) x 185mm (L)
CURVED	95mm (H) x 130mm (L)	100mm (H) x 145mm (L)	110mm (H) x 165mm (L)	130mm (H) x 185mm (L)
TEARDROP	-	150mm (H) x 150mm (L)	185mm (H) x 160mm (L)	230mm (H) x 180mm (L)

# LATERAL PAD TEMPLATES



# HEADREST BRACKET OPTIONS

ASSIST HEADREST BRACKET



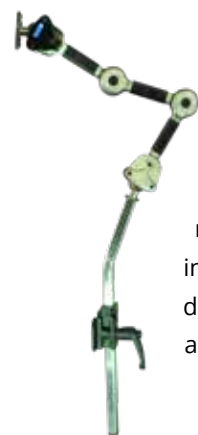
Depth and height adjustability with quick-release removal.

AXIS HEADREST BRACKET



Dual ball infinite angle, tilt, depth and height adjustability with quick-release removal.

AXIS 3 HEADREST BRACKET



Dual ball, long reach 3 section infinite angle, tilt, depth and height adjustability with quick-release removal.

# HEADREST PAD OPTIONS

SQUARE PAD



OPEN CURVED PAD



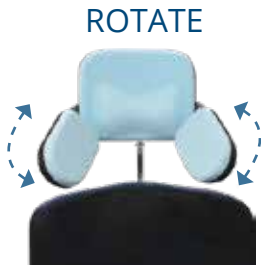
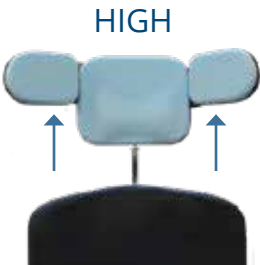
CONTOURED PAD



PIVOT-WING PAD



The Pivot-Wing Pad enables multiple infinite adjustability with secure locking system.



	SMALL	LARGE
SQUARE PAD	185MM (W) X 145MM (H)	225MM (W) X 155MM (H)
OPEN CURVED PAD	300MM (W) X 160MM (H)	380MM (W) X 200MM (H)
CONTOURED PAD	230MM (W) X 140MM (H)	280MM (W) X 180MM (H)
PIVOT-WING PAD	ADJUSTABLE 160MM (W) - 480MM (W) X 145MM (H)	





# Dreamline

BELTS / HARNESSSES

# HIP BELT OPTIONS

2-point centre pull hip belt with side-release buckle



2-point dual pull hip belt with side-release buckle



2-point centre pull hip belt with centre-release buckle



4-Point centre pull hip belt with side-release buckle



4-point dual pull hip belt with side-release buckle



4-point centre pull hip belt with centre release buckle



4-point rear pull hip belt with side-release buckle



4-point rear pull hip belt with centre-release buckle



Gel slip-on pads



PAD DIMENSIONS		2-POINT CENTRE PULL SIDE- RELEASE	2-POINT DUAL PULL SIDE- RELEASE	2-POINT CENTRE PULL CENTRE- RELEASE	4-POINT CENTRE PULL SIDE- RELEASE	4-POINT DUAL PULL SIDE- RELEASE	4-POINT CENTRE PULL CENTRE- RELEASE	4-POINT REAR PULL SIDE- RELEASE	4-POINT REAR PULL CENTRE- RELEASE
X-SMALL	155mm (L) x 50mm (W)	✓	✓	-	✓	✓	-	-	-
SMALL	190mm (L) x 60mm (W)	✓	✓	✓	✓	✓	✓	✓	✓
MEDIUM	235mm (L) x 60mm (W)	✓	✓	✓	✓	✓	✓	✓	✓
LARGE	275mm (L) x 75mm (W)	✓	✓	✓	✓	✓	✓	✓	✓

# HARNESS OPTIONS

## H2X HARNESS



	H2X HARNESS
X-SMALL	210mm (W) x 320mm (H)
SMALL	280mm (W) x 380mm (H)
MEDIUM	360mm (W) x 440mm (H)
LARGE	420mm (W) x 500mm (H)
X-LARGE	520mm (W) x 600mm (H)

# HARNESS ACCESSORIES

## H2X PROTECTOR SLEEVES



Protect the harness from food and saliva with these reversible zip-on washable sleeves.

## HARNESS RETAINER KIT



The Harness Retainer Kit ensures the harness is accurately positioned over the end user`s shoulders.



# TRANSPORT SAFETY APPROVED

The following components have all been tested and are both WC20 and ISO 7176-19 certified for forward facing transportation with an occupant in a motor vehicle: Quick-Release Seat Pan, all Dreamline Cushions, Dreamline Support Backrest, Dreamline Contour Backrest, Dreamline STX Backrest, Dreamline S3 Backrest, Quick-Release Hip Guides and Armrests, Swing-Down Pommel, both Swing-Away and Fixed Laterals, and all Dreamline Headrests.

Dreamline Wheelchair Seating fully complies with RESNA WC-4:2012, Section 20 and is designed only for use with wheelchair frames that comply with the frontal-impact requirements of RESNA WC-4:2012, Section 19 when used as a transportation device for an occupant in a motor vehicle.

Dreamline Wheelchair Seating must only be used on wheelchair frames which provide four anchorage points and pelvic belt anchor points that comply with the requirements of RESNA WC-4:2012, Section 19.

Dreamline Wheelchair Seating has been designed to accommodate the proper use of vehicle-anchored belt restraints with a rating of 16 out of 16 and a) pass level of A+ (Excellent) ease of properly positioning vehicle-anchored belt restraints on the wheelchair passenger, and b) the degree to which proper positioning of belt restraints can be achieved.



# ROLAPAL

## OUR MISSION

At Rolapal, home of Dreamline Wheelchair Seating, we have been privileged to meet with many amazing people who face day-to-day challenges. It is our mission to find ways to liberate both those who need care and those caring for others.

## OUR VISION

To create revolutionary mobility products which are easy to use, have outstanding comfort and versatility, whilst minimising the need for maintenance.

We firmly believe in the long term benefits of 24 hour postural management. Other programmes can help with maintaining good posture during the day and night, which will help the end user sit better.

### PHYSIOTHERAPY / STRETCHES / EXERCISES

SWIMMING

STANDING

WALKING

SLEEP SYSTEMS

### INDOOR POSTURAL SEATING

The more time spent in a postural controlled environment reduces the risk of an asymmetrical posture setting in.

## RESPONSIBILITY

Rolapal is committed to helping to protect the future of our planet and has procedures to reduce, recycle and reuse, and is always looking for opportunities to become more efficient. At Rolapal we reduce waste generation through applying LEAN efficiency principles in our production processes. We also recycle our metal and packaging waste.

Rolapal products themselves are approximately 66% recyclable and have an excellent life expectancy. Rolapal also uses recycled materials in our product packaging.

# NOTES







Proudly distributed by:

**permobil**



PERMOBIL AUSTRALIA | 1300 845 483 | [ORDERS.AU@PERMOBIL.COM](mailto:ORDERS.AU@PERMOBIL.COM) | [PERMOBIL.COM.AU](http://PERMOBIL.COM.AU)

AU Rev Oct 2019